



Introducing

FASTFIT MAX

LVP



Reside

FOR *every* AUSTRALIAN HOME





FASTFIT MAX



Ultra Realistic
Timber Designs



Water-Resistant
Surface



Easy to Clean
& Maintain



Highly
Durable



FROSTED GUM FFM11450



RECLAIMED GUM FFM11451



CRISP SPOTTED GUM FFM11452



FIRESIDE GUM FFM11453





Plank Size 230mm x 1500mm | Thickness 5.0mm | Wear Layer 0.55mm

Qty Per Carton 5 planks | M2 Per Carton 1.725sqm

Surface Finish Matte PUR | Slip Rating P3



UMBER FFM11454



HAZELNUT FFM11455



TAWNY FFM11456



FAWN FFM11457

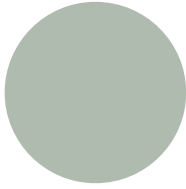


MINK FFM11458



MOLESKIN FFM11459





FROSTED GUM

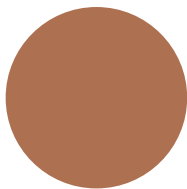
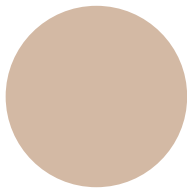
The hues of Frosted Gum display a soft palette ranging from pale beige to peach-browns, with a straight to wavy grain pattern complemented by subtle growth rings. These tones make Frosted Gum the ideal choice for contemporary living spaces. In this setting it pairs beautifully with Scandinavian simplicity, neutral colours, clean lines and textured accents with biophilic touches like greenery and sage green walls for a serene, nature-inspired space.





Biophilic Scandi Style





RECLAIMED GUM

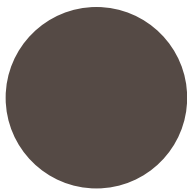
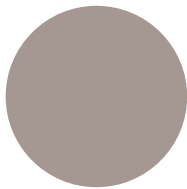
Refined Gum presents a rich blend of light brown to soft golden hues, with an irregular grain highlighted by dark streaks and occasional knots, adding warmth and character to any space. In this dining room, it forms a striking base for a modern take on 70s-inspired design. Clean lines and organic curves meet minimalist aesthetics, while terracotta hero chairs introduce a vibrant pop of colour, creating a space that's both inviting and stylish.





Modern Retro Twist





CRISP SPOTTED GUM

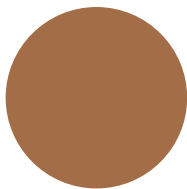
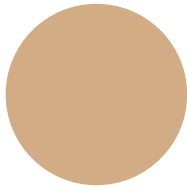
The gentle movement of Crisp Spotted Gum, shifting from warm gold to honey tones with subtle gum veins and fiddleback effect, beautifully complements this sleek, minimalist kitchen. The monochromatic palette with dark lower cabinetry paired with white upper laminate creates a clean, sophisticated look. The island bench, simple bar stools and pendant lighting enhance the minimalist aesthetic, while the warm floor planks add a welcoming, homely atmosphere.





Monochrome Minimalism





FIRESIDE GUM

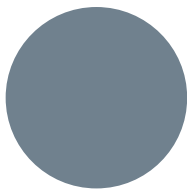
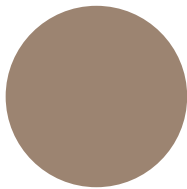
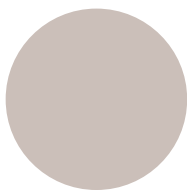
Fireside Gum's colour, ranging from light to rich reddish browns combined with its interlocked grain, distinctive fiddleback markings and dark gum veins, adds depth and warmth to this modern living room. This space balances minimalism with organic elements, featuring clean lines, refined furniture and a calming neutral palette. While the minimalist aesthetic keeps the space open, the variation in the floor planks introduces richness and grounds the space in earthy elegance.





Organic Elegance





UMBER

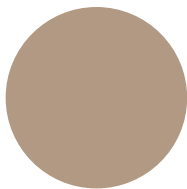
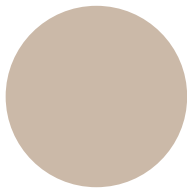
Umber offers a rich medium brown tone with subtle variations from light to dark, paired with an open grain featuring growth rings and knots, bringing warmth and understated elegance to any space. This versatile plank adds a homely touch to both modern and classical interiors. In this setting, a leather couch paired with bouclé accents and rustic wood furniture creates a harmonious blend of comfort and sophistication, delivering a look that is both modern and timeless.





Timeless Classic





HAZELNUT

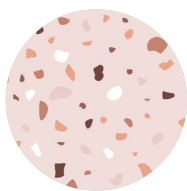
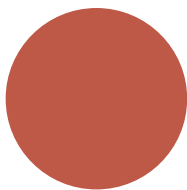
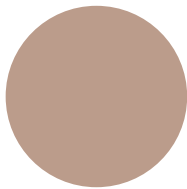
Hazelnut showcases a warm palette of honey and deep amber tones, enhanced by a flowing, wavy grain pattern that brings a sense of movement and refinement to the floor. It's a sophisticated addition to this kitchen where modern minimalism meets industrial design. Textural contrasts, like vertical paneling and white marble countertops, add visual interest and elevate the space with a sense of understated luxury.





Minimalist Luxury





TAWNY

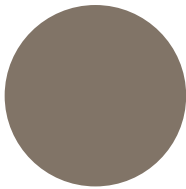
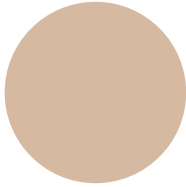
Tawny displays a light palette of sandy beige and golden honey, complemented by a linear grain pattern marked with natural irregularities, delicate knots and subtle growth rings. In this contemporary bedroom, it serves as a refined foundation that enhances the aesthetic without competing with other design elements. Its soft tones and subtle grain provide visual balance, complementing the room's richer accents and creating a harmonious, welcoming atmosphere.





Contemporary Balance





FAWN

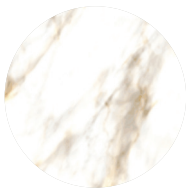
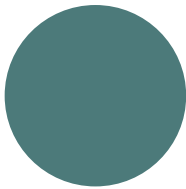
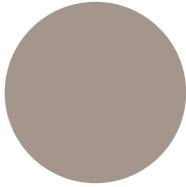
Fawn reveals subtle tonal variations, shifting from pale to medium taupe with hints of greige. Its elongated, open oak grain flows rhythmically along the planks, occasionally interrupted by gentle knots. This light blond colouration beautifully complements the minimalist, eco-sustainable aesthetic of the space. When paired with natural textures and a neutral colour palette, the oak finish contributes to a warm, calming atmosphere that feels both modern and inviting.





Eco Chic





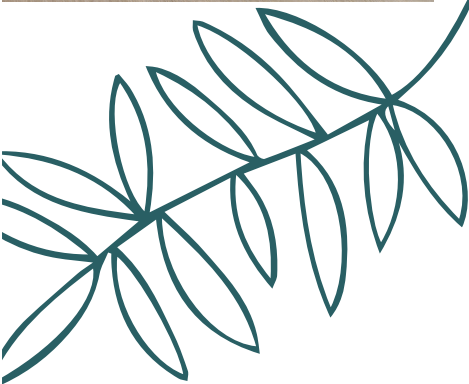
MINK

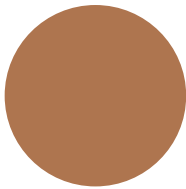
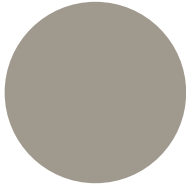
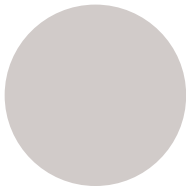
Mink presents a light greyish tone with variations from soft ash to warm taupe, enriched by the hint of silvery undertone. Its straight grain pattern is accented by visible growth rings and striking knots. In this modern kitchen and dining area, Mink enhances the space with subtle sophistication. The Shaker style, with its clean lines and recessed panel doors, introduces a traditional touch while maintaining a harmonious blend of old and new.





Modern Shaker





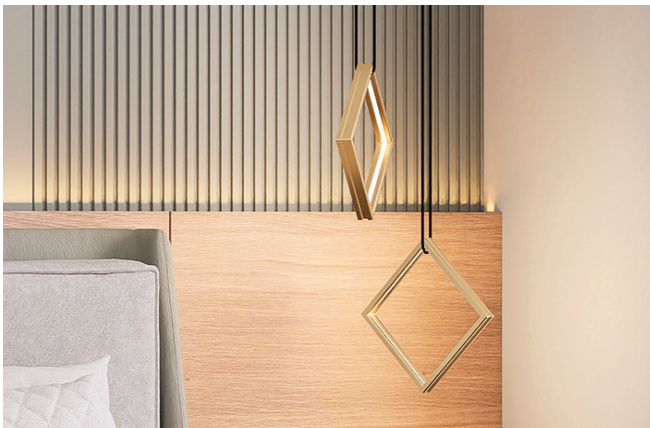
MOLESKIN

Moleskin showcases a rich colour palette, ranging from taupe to deep, cool browns, with an intricate grain pattern marked by growth rings, delicate knots and subtle irregularities. It aligns beautifully with this elegant, luxurious bedroom design evoking resort style vibes. Texture is introduced through layered bedding, a mix of fabrics and patterns, and detailed wall panelling. Together, these elements create a tactile richness that pairs perfectly with this sophisticated floor choice.





Resort Lux





FASTFIT MAX

Exclusive to FLOORING  TRA

